



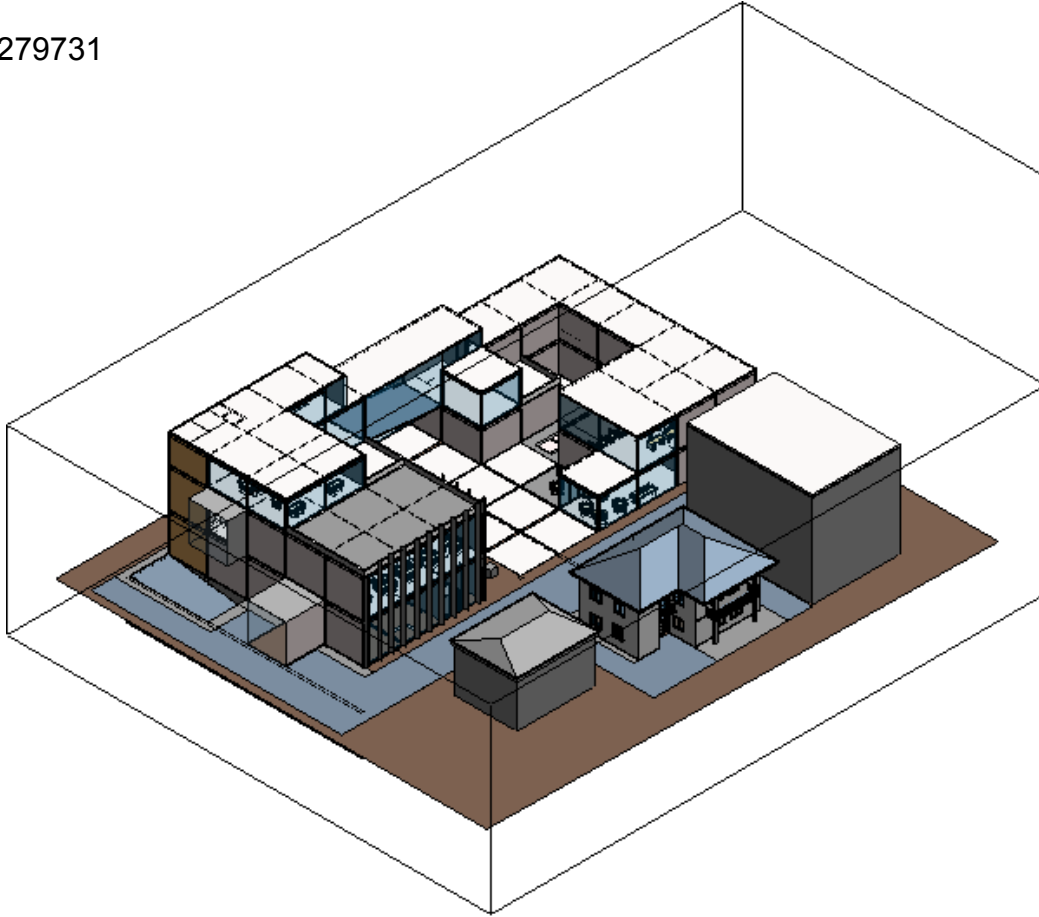
FINAL PROJE 2015

FINAL PROJE 2015 Analysis

Analyzed at 27.12.2015 20:02:52

## Energy Analysis Result

279731



## Building Performance Factors

Location:	bağçelievler ankara
Weather Station:	53159
Outdoor Temperature:	Max: 36°C/Min: -24°C
Floor Area:	1.097 m <sup>2</sup>
Exterior Wall Area:	2.096 m <sup>2</sup>
Average Lighting Power:	9.69 W / m <sup>2</sup>
People:	33 people
Exterior Window Ratio:	0,01
Electrical Cost:	0,14 \$ / kWh
Fuel Cost:	1,16 \$ / Therm

## Energy Use Intensity

Electricity EUI:	146 kWh / sm / yr
Fuel EUI:	828 MJ / sm / yr
Total EUI:	1,352 MJ / sm / yr

### Life Cycle Energy Use/Cost

Life Cycle Electricity Use:	3,924,756 kWh
Life Cycle Fuel Use:	22,332,568 MJ
Life Cycle Energy Cost:	367,244 \$

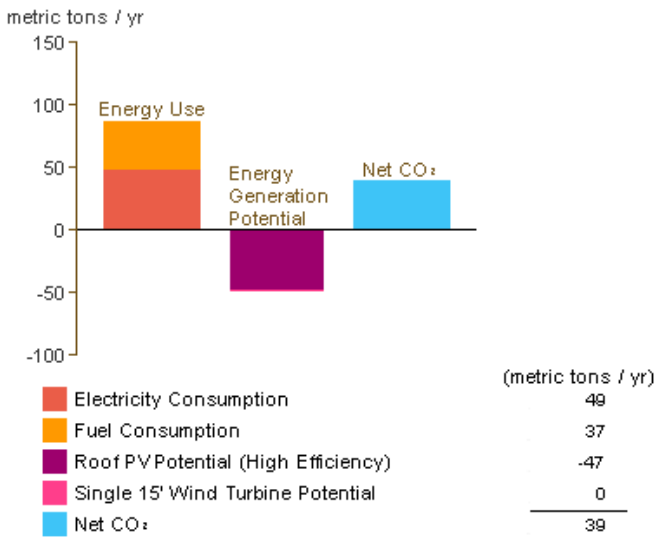
\*30-year life and 6.1% discount rate for costs

### Renewable Energy Potential

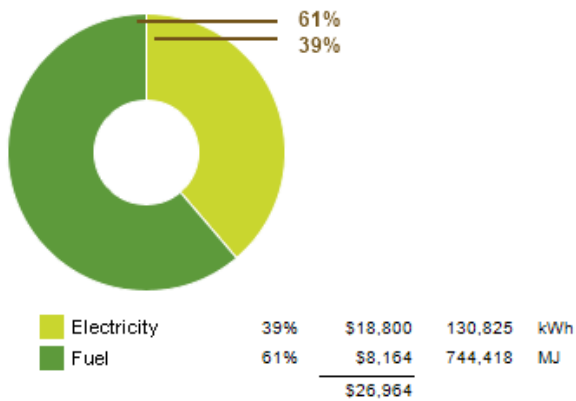
Roof Mounted PV System (Low efficiency):	42,239 kWh / yr
Roof Mounted PV System (Medium efficiency):	84,477 kWh / yr
Roof Mounted PV System (High efficiency):	126,716 kWh / yr
Single 15' Wind Turbine Potential:	989 kWh / yr

\*PV efficiencies are assumed to be 5%, 10% and 15% for low, medium and high efficiency systems

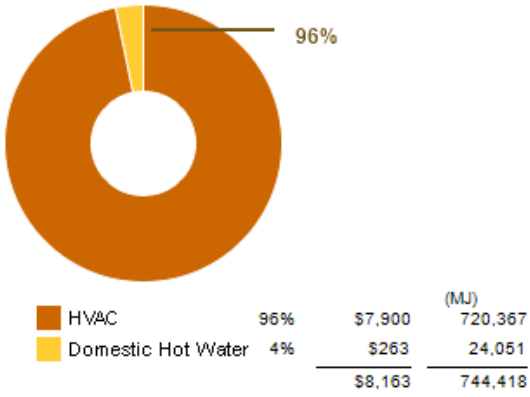
### Annual Carbon Emissions



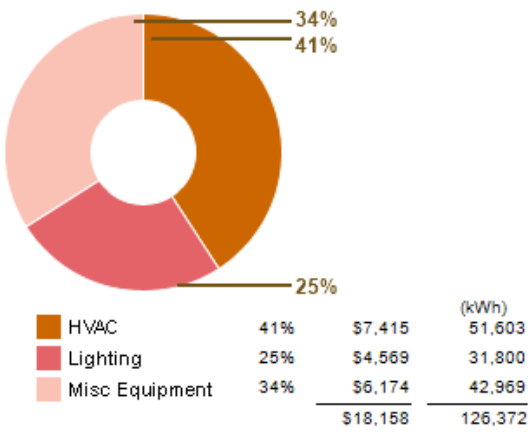
### Annual Energy Use/Cost



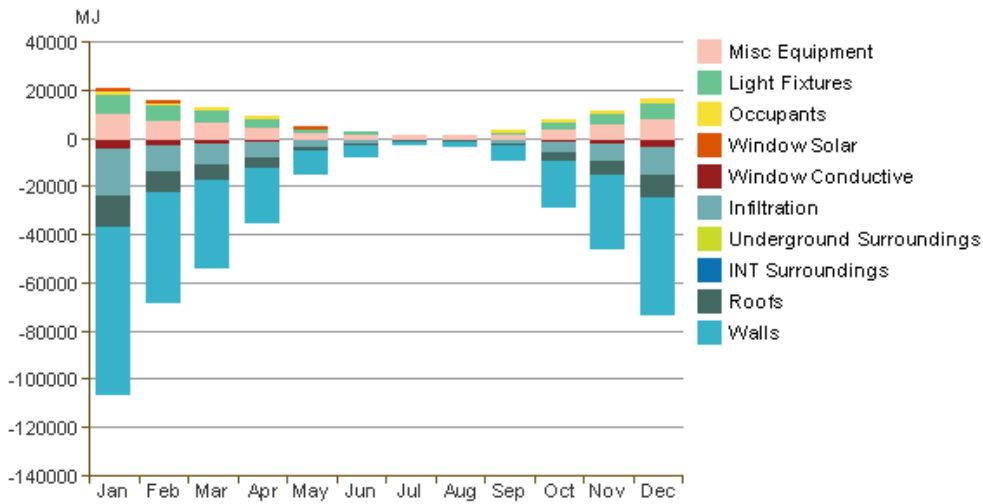
### Energy Use: Fuel



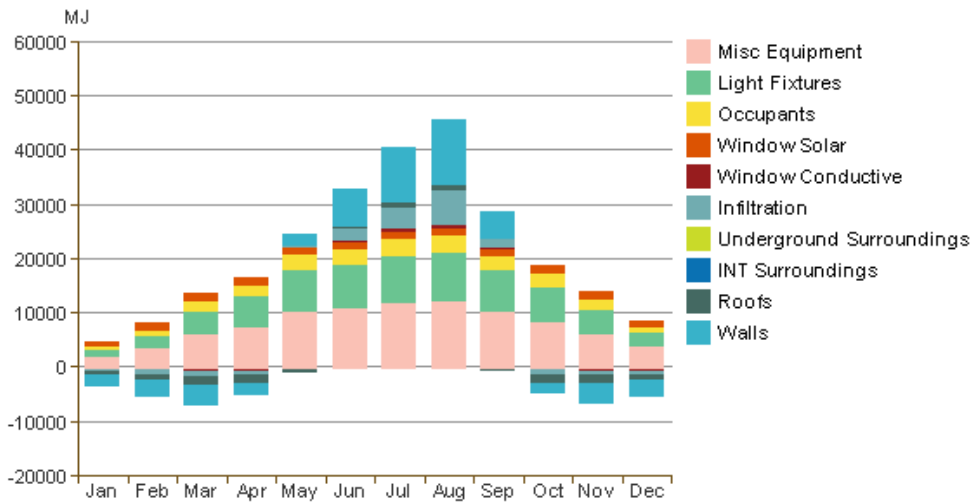
Energy Use: Electricity



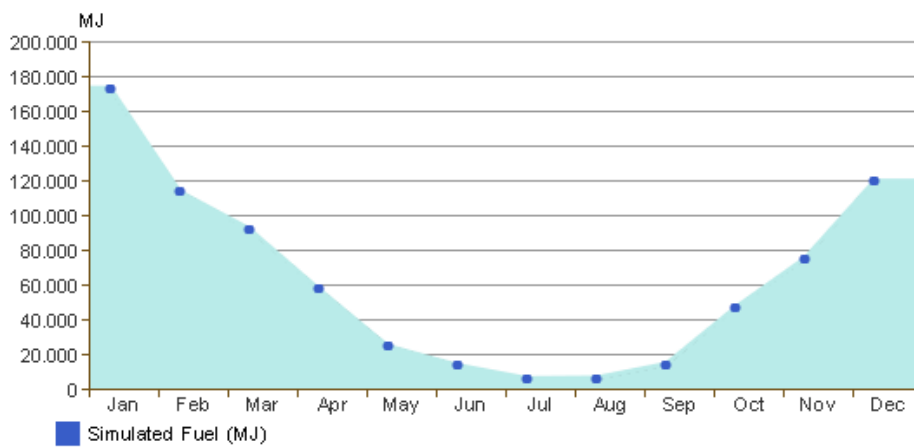
Monthly Heating Load



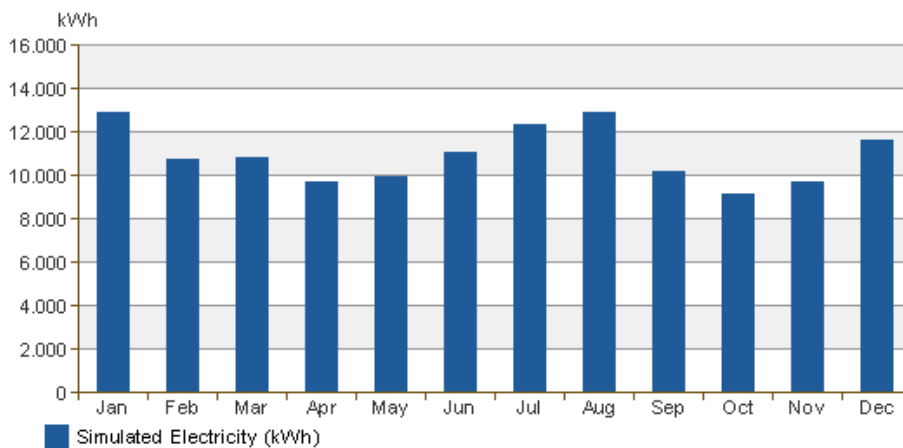
Monthly Cooling Load



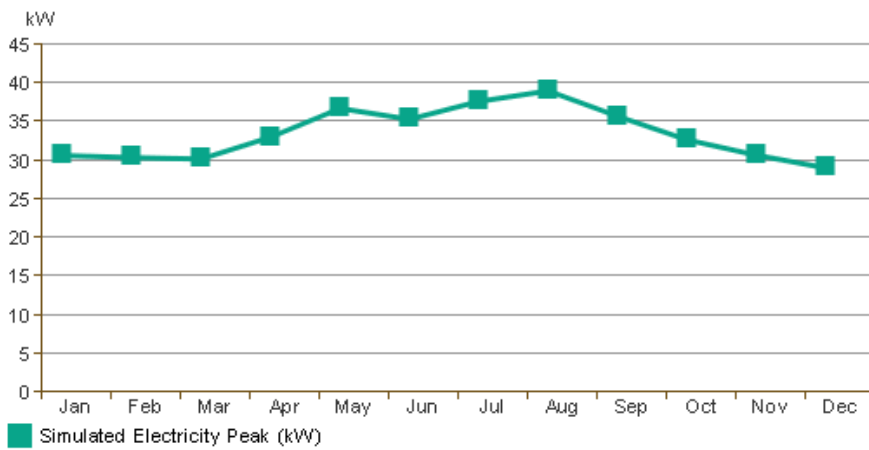
### Monthly Fuel Consumption



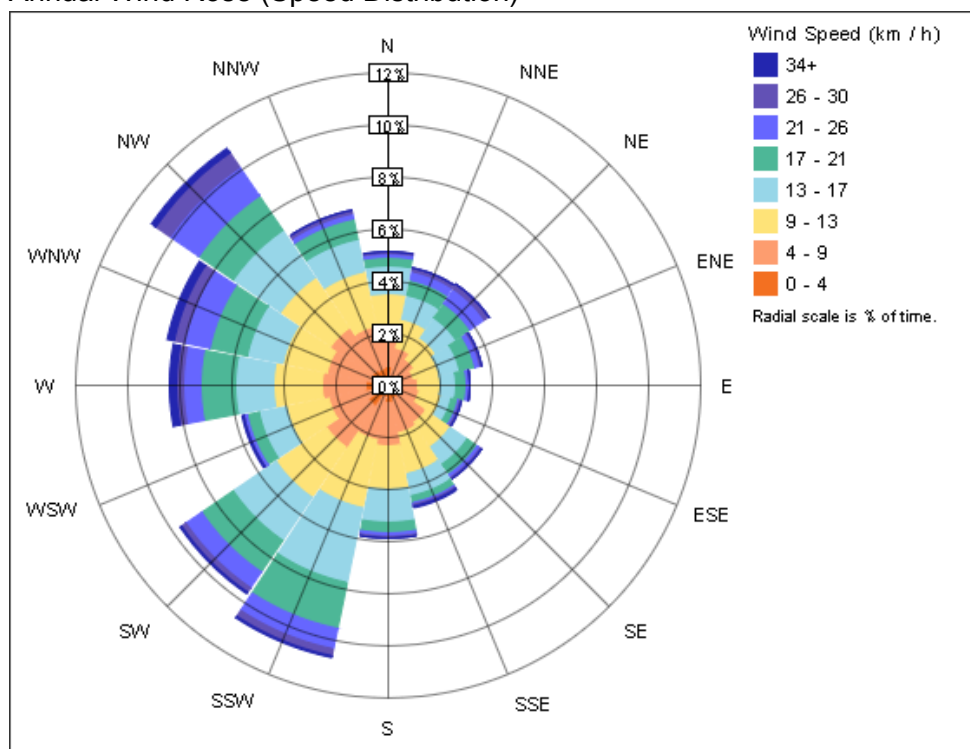
### Monthly Electricity Consumption



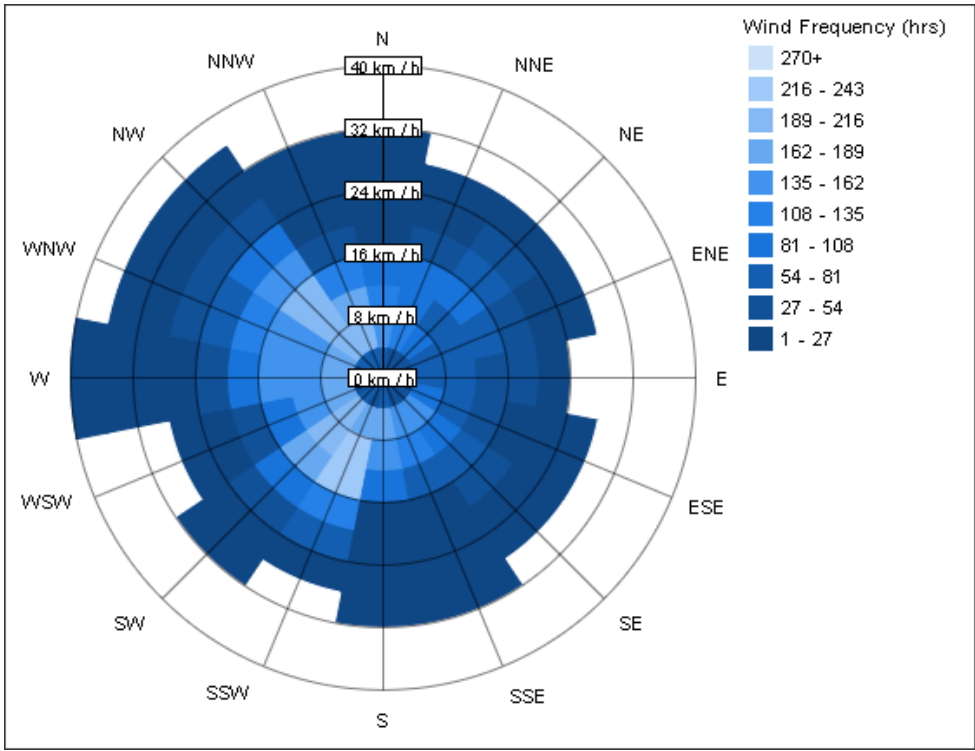
### Monthly Peak Demand



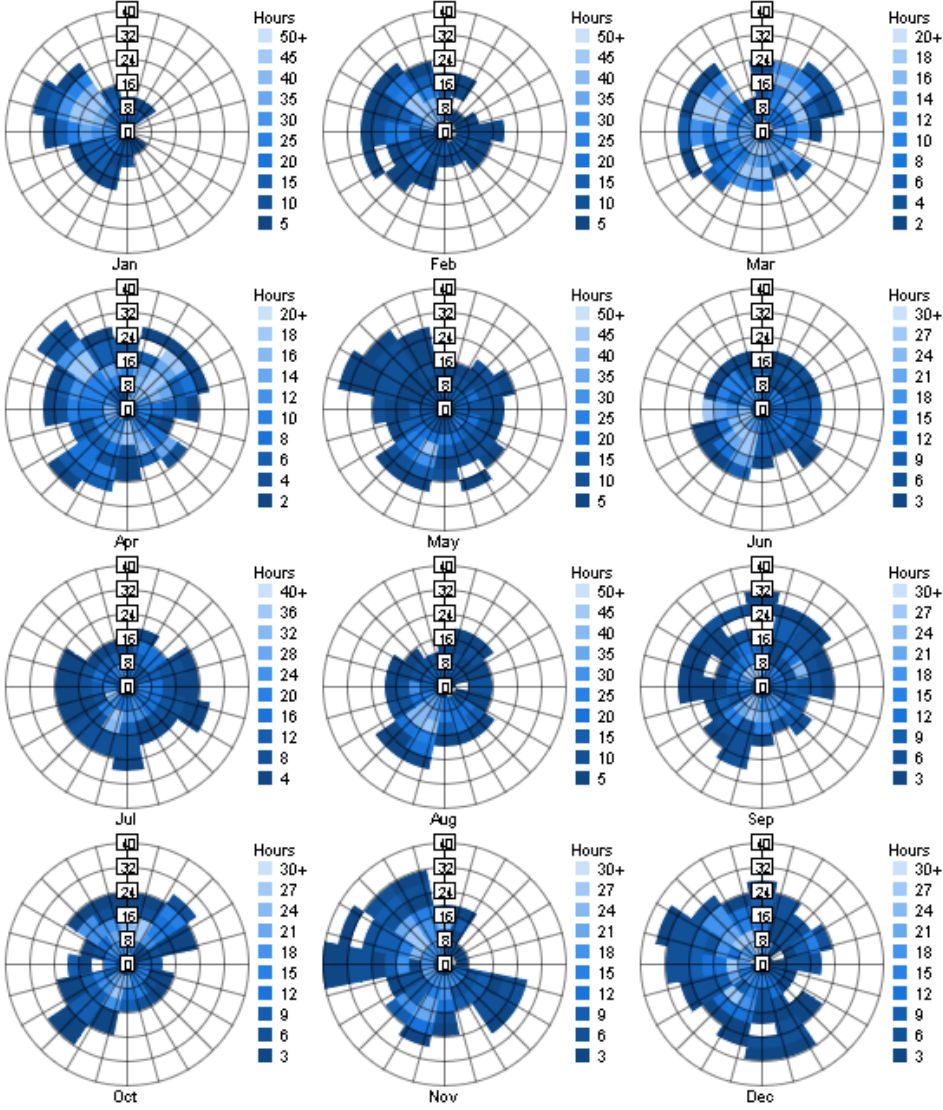
Annual Wind Rose (Speed Distribution)



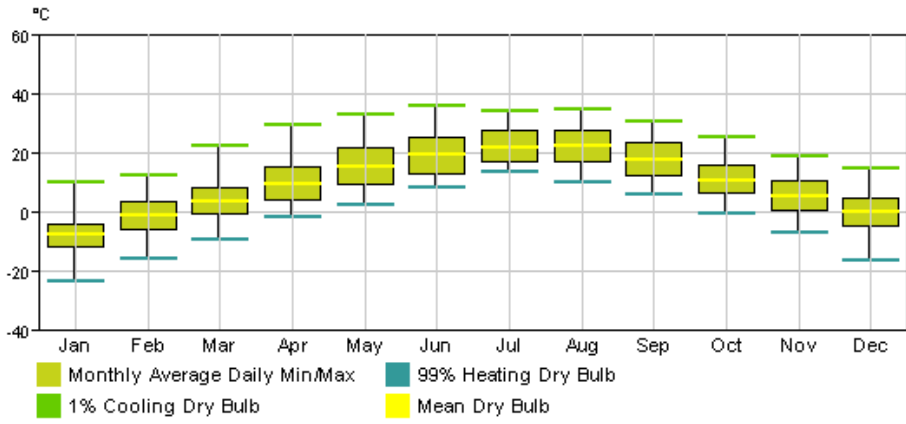
Annual Wind Rose (Frequency Distribution)



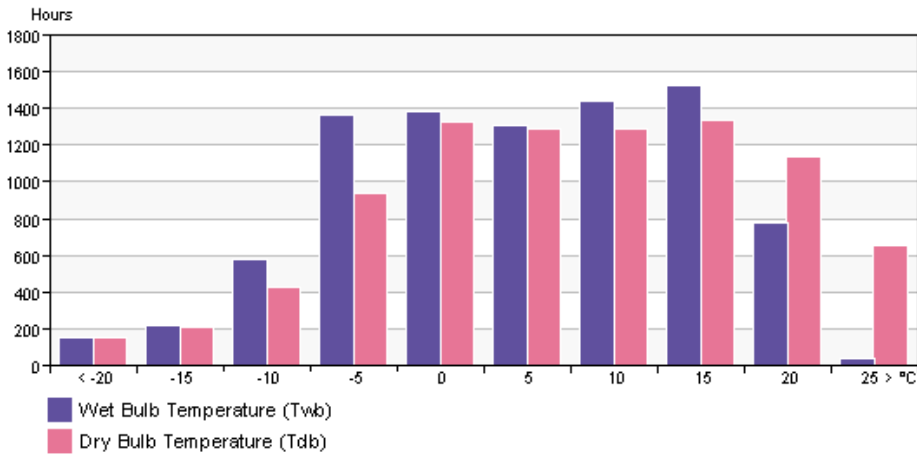
Monthly Wind Roses



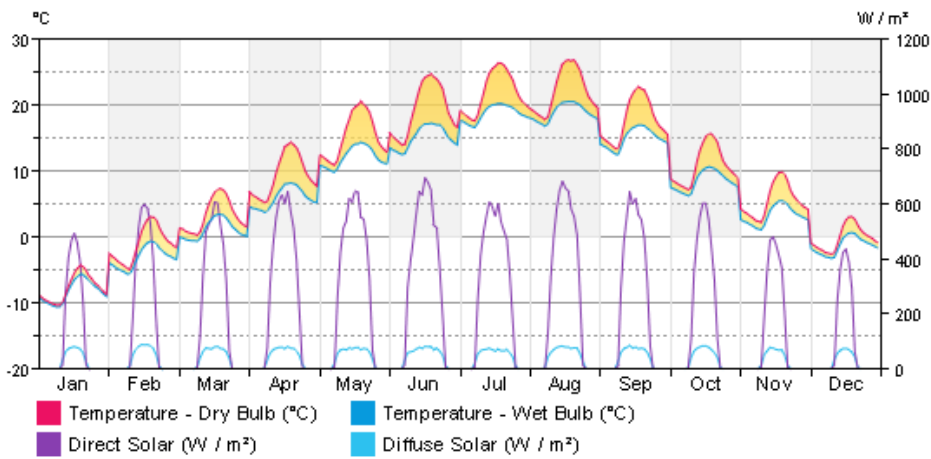
### Monthly Design Data



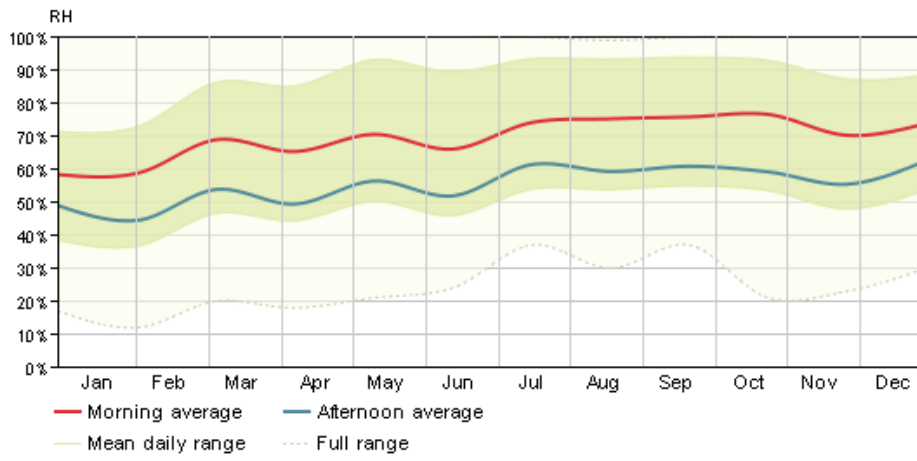
### Annual Temperature Bins



### Diurnal Weather Averages



### Humidity



© Copyright 2015 Autodesk, Inc. All rights reserved. Portions of this software are copyrighted by James J. Hirsch & Associates, the Regents of the University of California, and others.

## Energy Analysis Data