



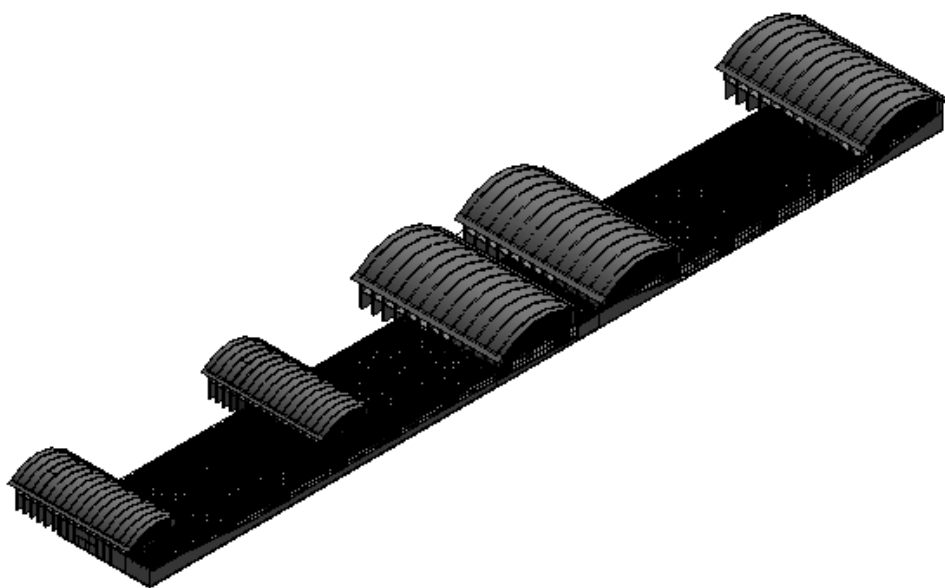
hangar-151226 (6)

hangar-151226 Analysis

Analyzed at 26.12.2015 13:34:06

## Energy Analysis Result

318170



## Building Performance Factors

|                         |                         |
|-------------------------|-------------------------|
| Location:               | Ankara, Turkey          |
| Weather Station:        | 188208                  |
| Outdoor Temperature:    | Max: 36°C/Min: -9°C     |
| Floor Area:             | 1.506 m <sup>2</sup>    |
| Exterior Wall Area:     | 0 m <sup>2</sup>        |
| Average Lighting Power: | 6.46 W / m <sup>2</sup> |
| People:                 | 41 people               |
| Exterior Window Ratio:  | Infinity                |
| Electrical Cost:        | 0,14 \$ / kWh           |
| Fuel Cost:              | 1,44 \$ / Therm         |

## Energy Use Intensity

|                  |                  |
|------------------|------------------|
| Electricity EUI: | 68 kWh / sm / yr |
| Fuel EUI:        | 640 MJ / sm / yr |
| Total EUI:       | 884 MJ / sm / yr |

### Life Cycle Energy Use/Cost

|                             |               |
|-----------------------------|---------------|
| Life Cycle Electricity Use: | 3,065,970 kWh |
| Life Cycle Fuel Use:        | 28,926,643 MJ |
| Life Cycle Energy Cost:     | 373.183 \$    |

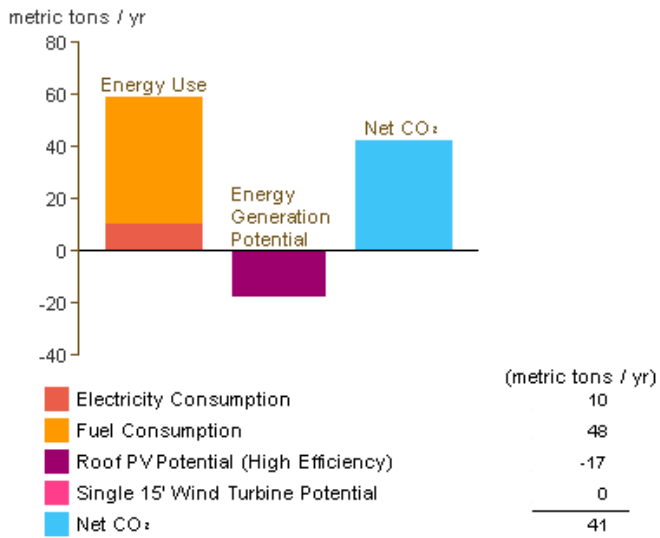
\*30-year life and 6.1% discount rate for costs

### Renewable Energy Potential

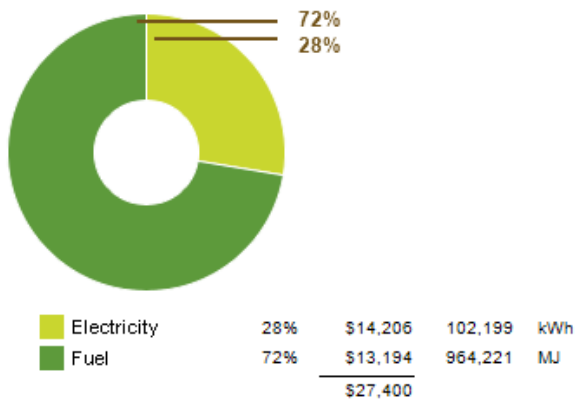
|   |                  |
|---|------------------|
| Roof Mounted PV System (Low efficiency):    | 53,596 kWh / yr  |
| Roof Mounted PV System (Medium efficiency): | 107,193 kWh / yr |
| Roof Mounted PV System (High efficiency):   | 160,789 kWh / yr |
| Single 15' Wind Turbine Potential:          | 943 kWh / yr     |

\*PV efficiencies are assumed to be 5%, 10% and 15% for low, medium and high efficiency systems

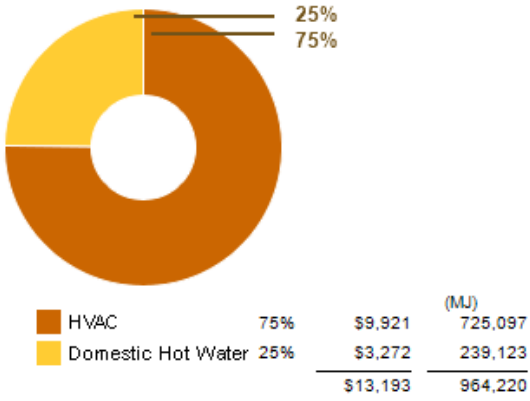
### Annual Carbon Emissions



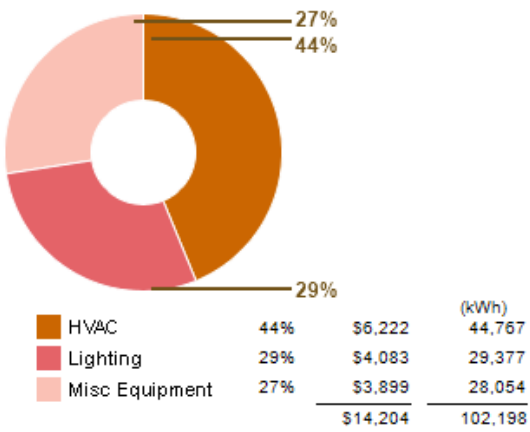
### Annual Energy Use/Cost



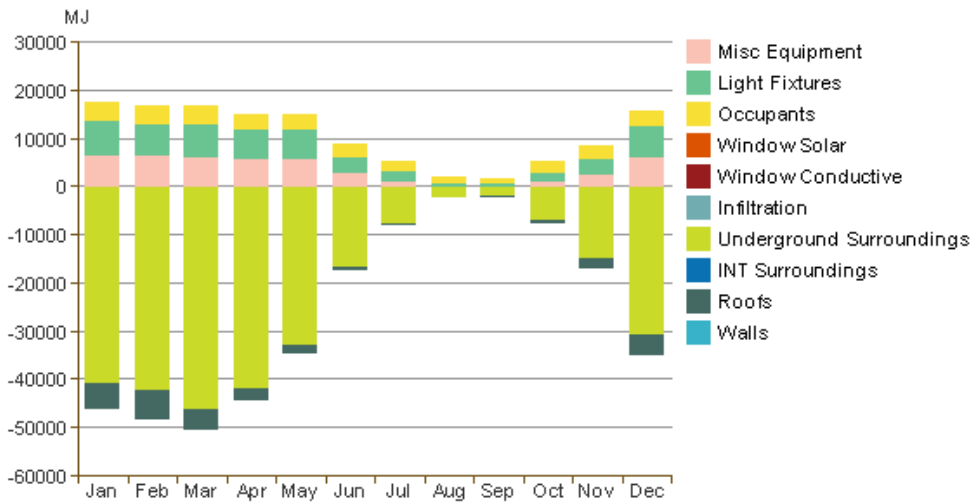
### Energy Use: Fuel



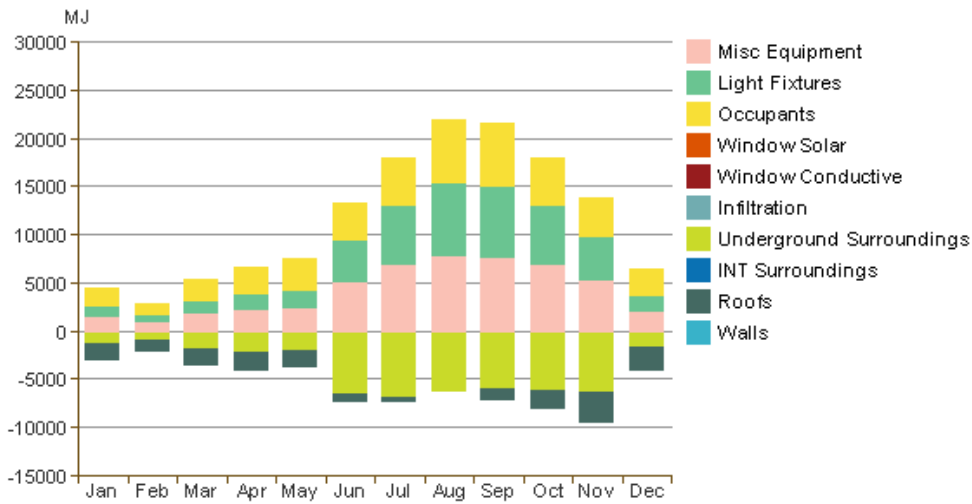
Energy Use: Electricity



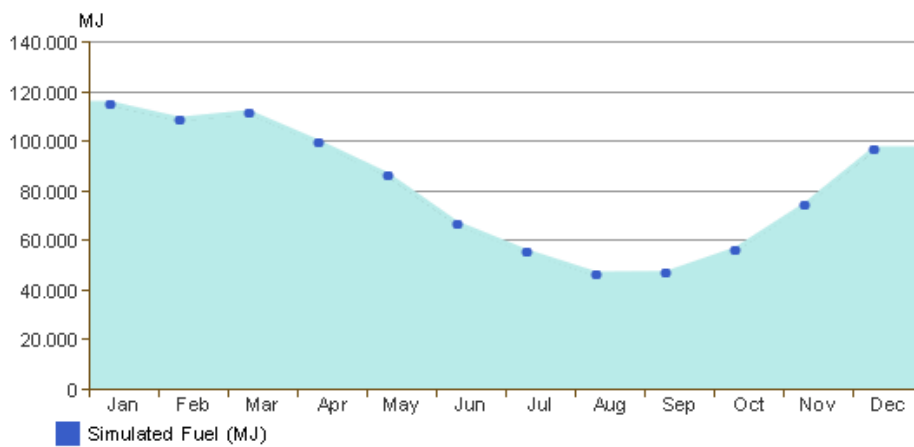
Monthly Heating Load



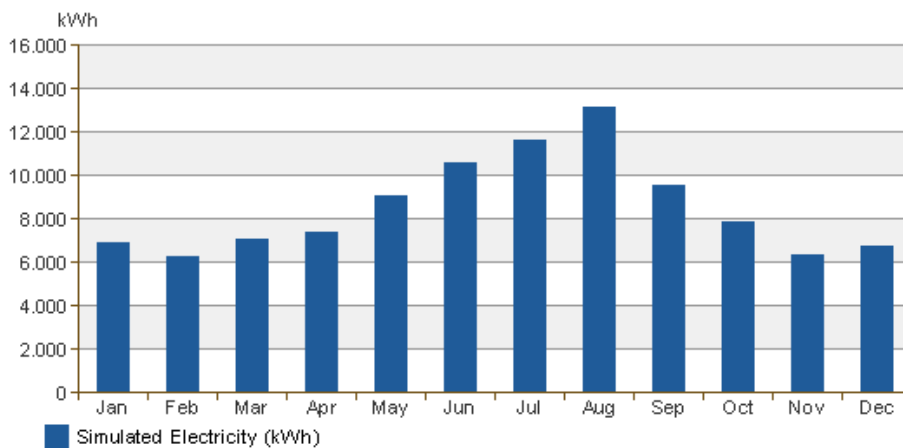
Monthly Cooling Load



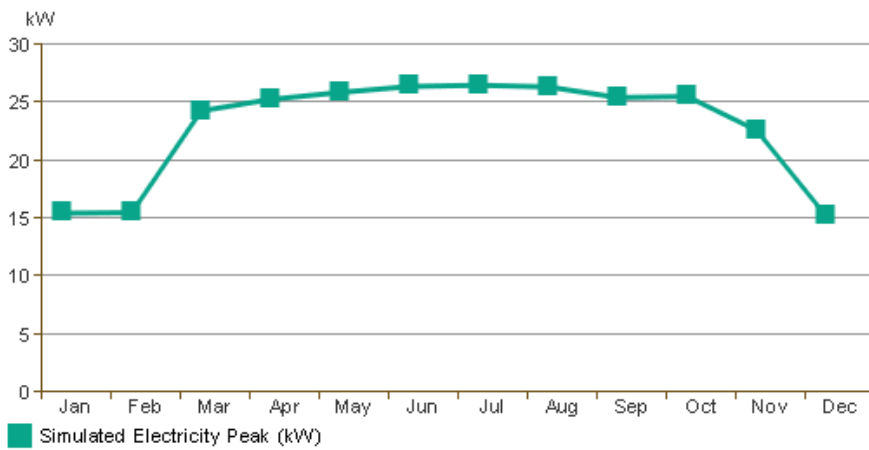
### Monthly Fuel Consumption



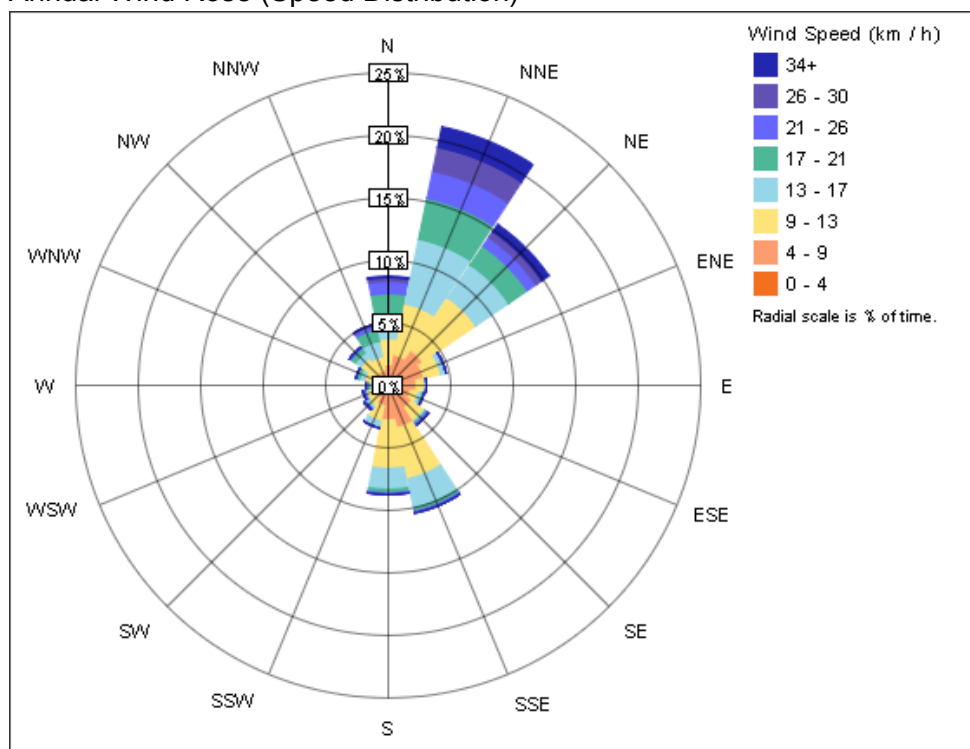
### Monthly Electricity Consumption



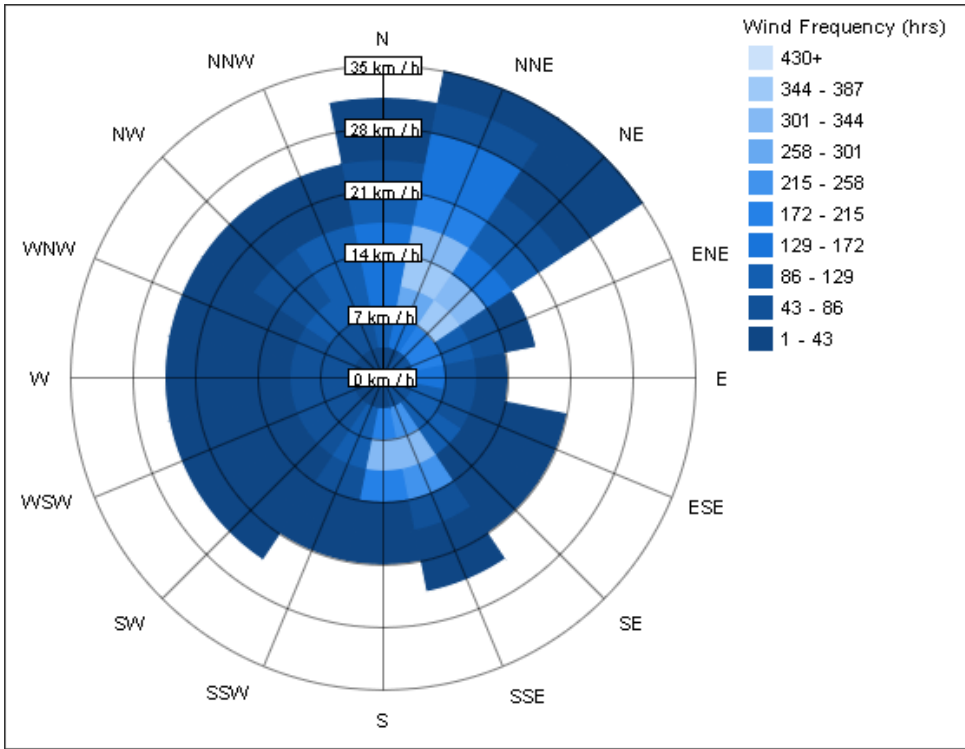
### Monthly Peak Demand



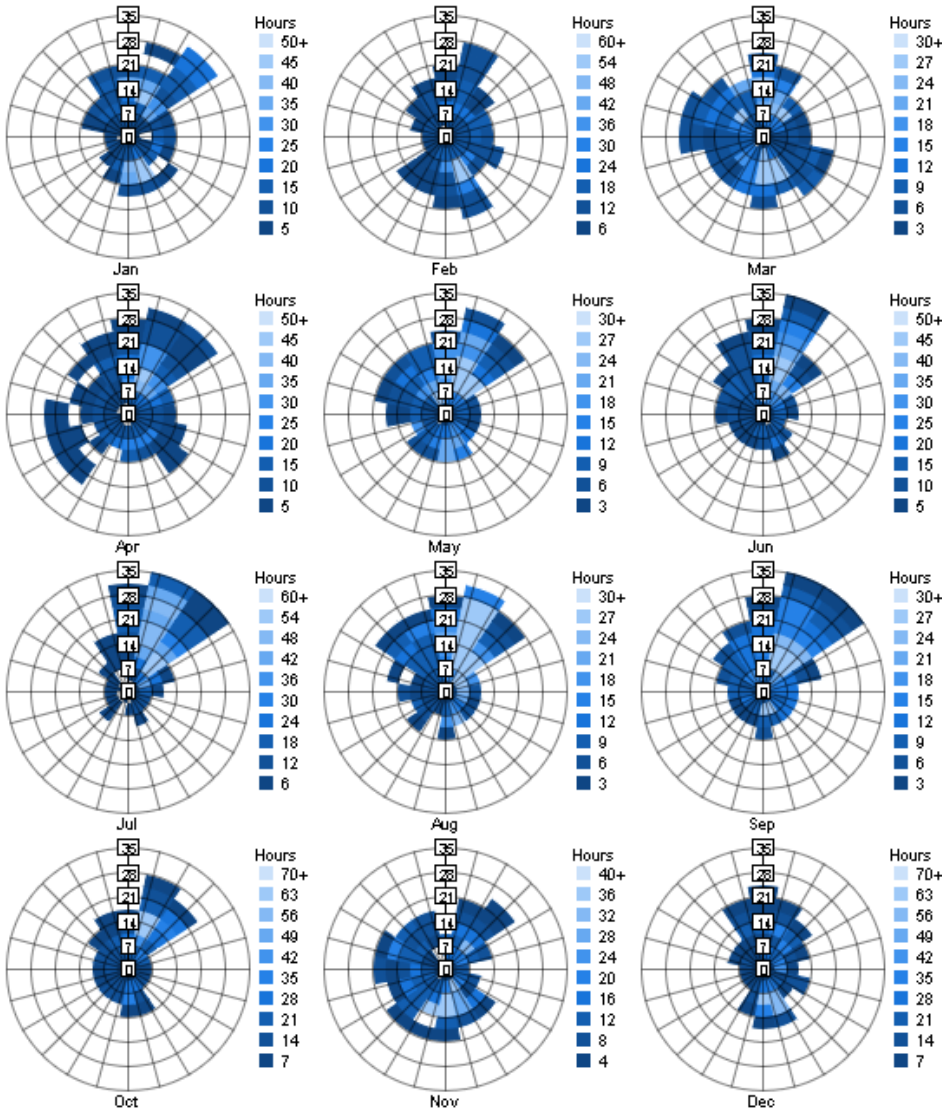
Annual Wind Rose (Speed Distribution)



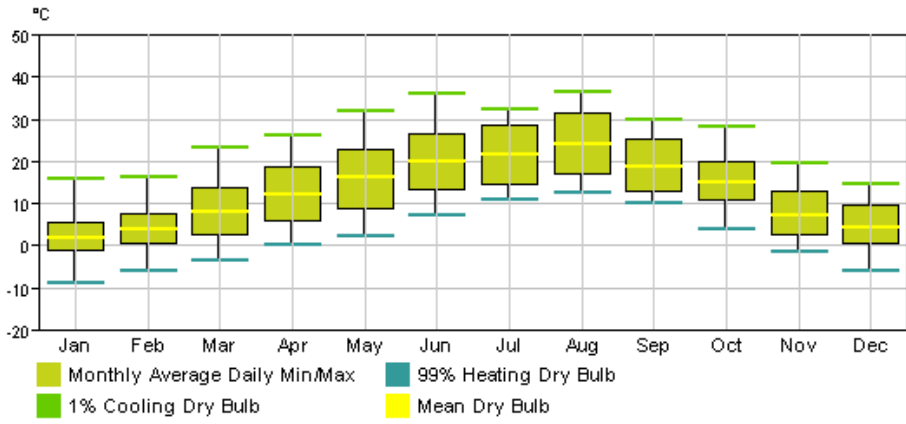
Annual Wind Rose (Frequency Distribution)



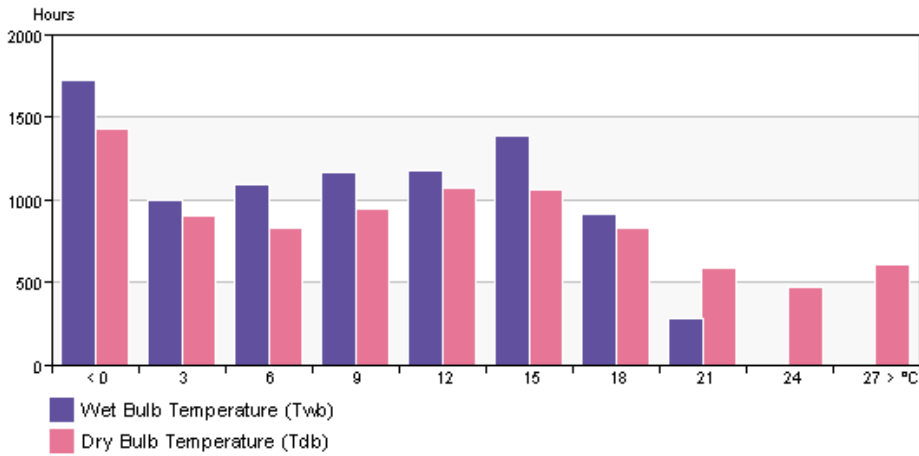
Monthly Wind Roses



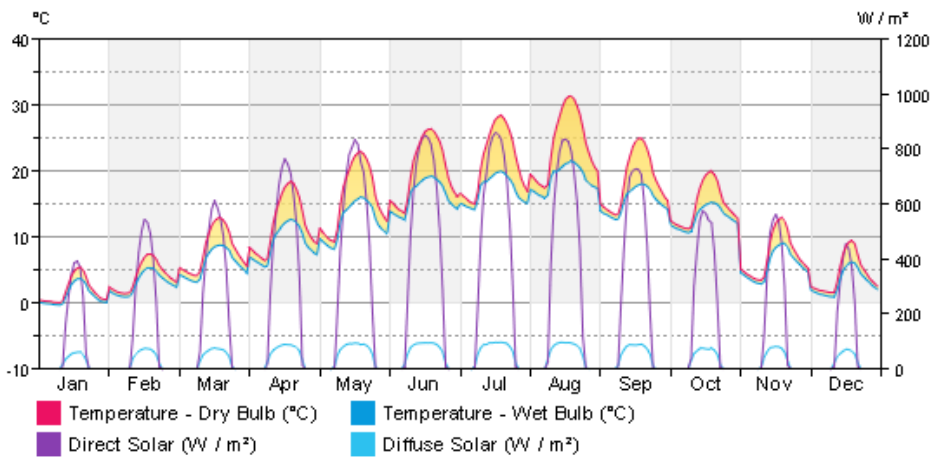
### Monthly Design Data



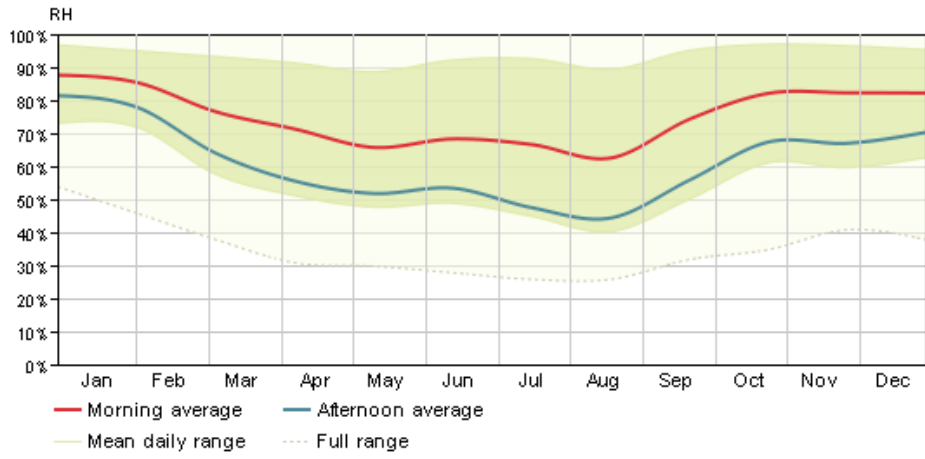
### Annual Temperature Bins



### Diurnal Weather Averages



### Humidity



© Copyright 2015 Autodesk, Inc. All rights reserved. Portions of this software are copyrighted by James J. Hirsch & Associates, the Regents of the University of California, and others.

### Energy Analysis Data