



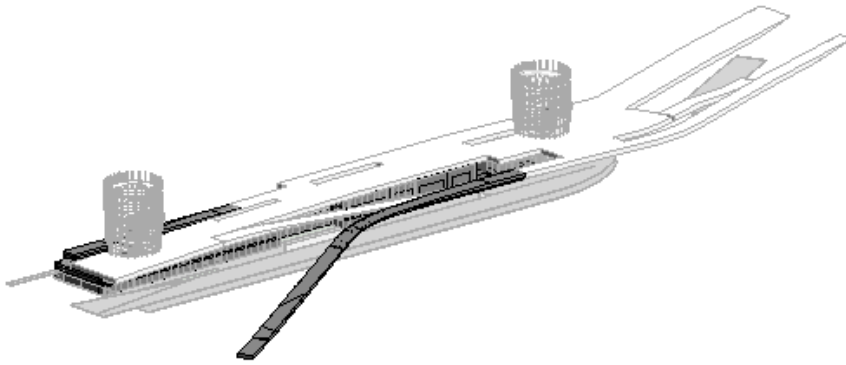
enerji icin

enerji icin Analysis

Analyzed at 21.12.2015 10:50:57

Energy Analysis Result

822205



Building Performance Factors

Location:	Ankara, Turkey
Weather Station:	1252135
Outdoor Temperature:	Max: 38°C/Min: -17°C
Floor Area:	5.475 m ²
Exterior Wall Area:	4.195 m ²
Average Lighting Power:	6.46 W / m ²
People:	317 people
Exterior Window Ratio:	0,43
Electrical Cost:	0,14 \$ / kWh
Fuel Cost:	1,44 \$ / Therm

Energy Use Intensity

Electricity EUI:	76 kWh / sm / yr
Fuel EUI:	392 MJ / sm / yr
Total EUI:	664 MJ / sm / yr

Life Cycle Energy Use/Cost

Life Cycle Electricity Use:	26,653,968 kWh
Life Cycle Fuel Use:	138,289,595 MJ
Life Cycle Energy Cost:	2,541,125 \$

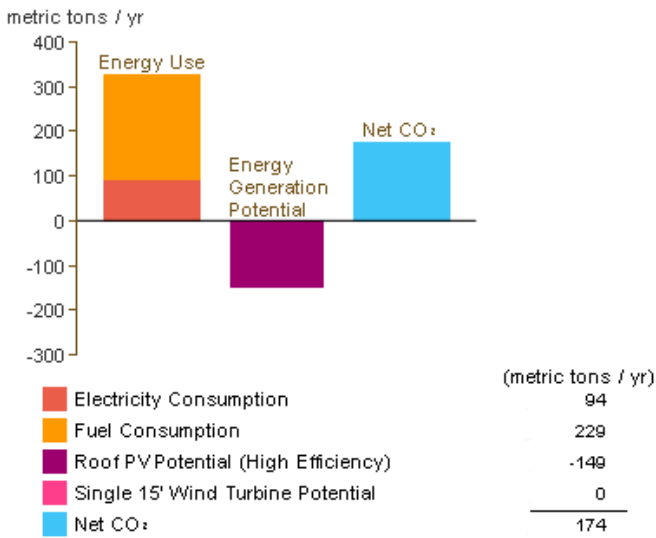
*30-year life and 6.1% discount rate for costs

Renewable Energy Potential

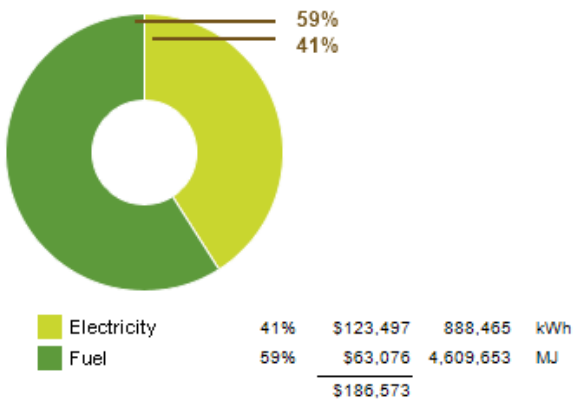
Roof Mounted PV System (Low efficiency):	467,254 kWh / yr
Roof Mounted PV System (Medium efficiency):	934,509 kWh / yr
Roof Mounted PV System (High efficiency):	1,401,763 kWh / yr
Single 15' Wind Turbine Potential:	777 kWh / yr

*PV efficiencies are assumed to be 5%, 10% and 15% for low, medium and high efficiency systems

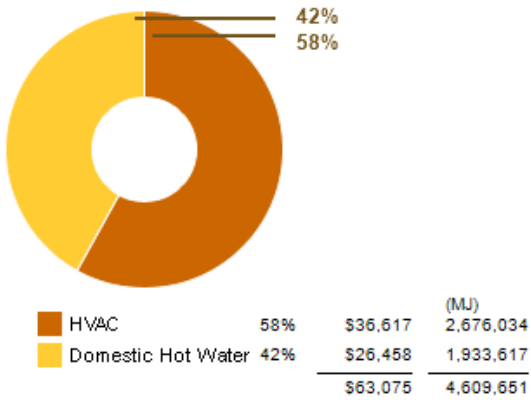
Annual Carbon Emissions



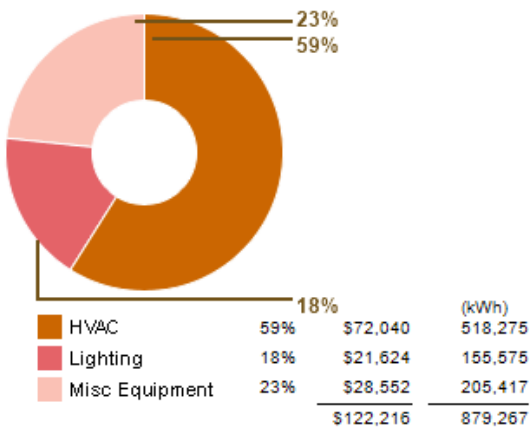
Annual Energy Use/Cost



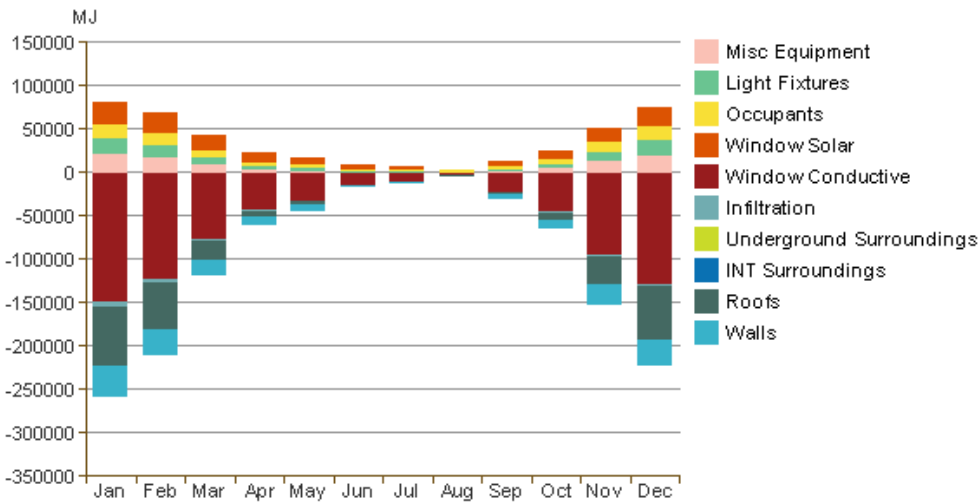
Energy Use: Fuel



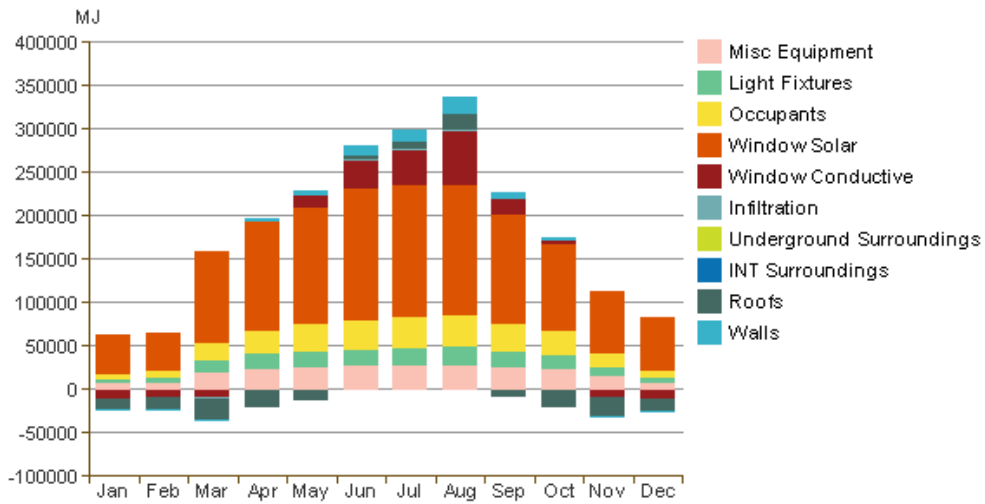
Energy Use: Electricity



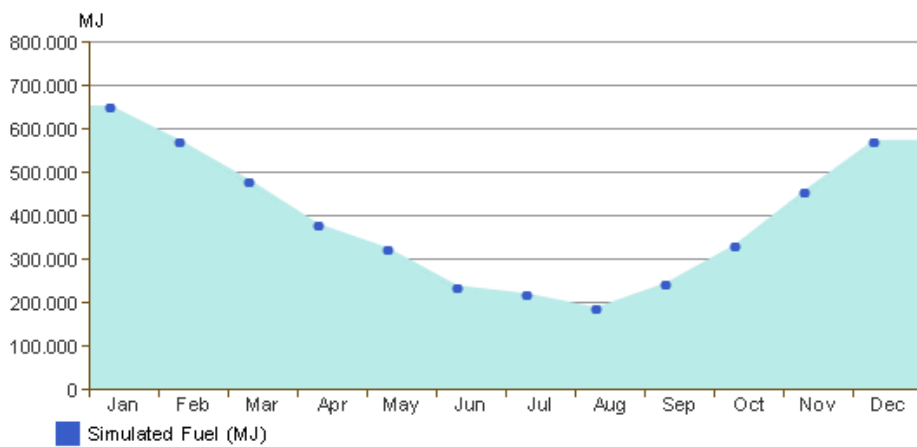
Monthly Heating Load



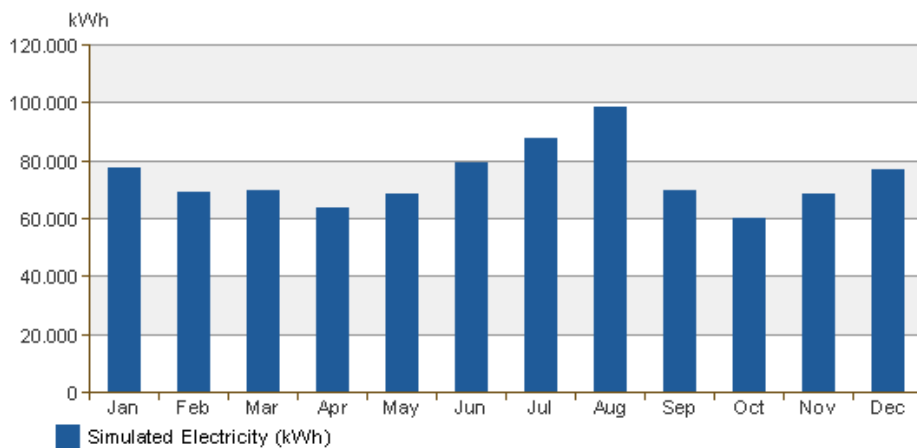
Monthly Cooling Load



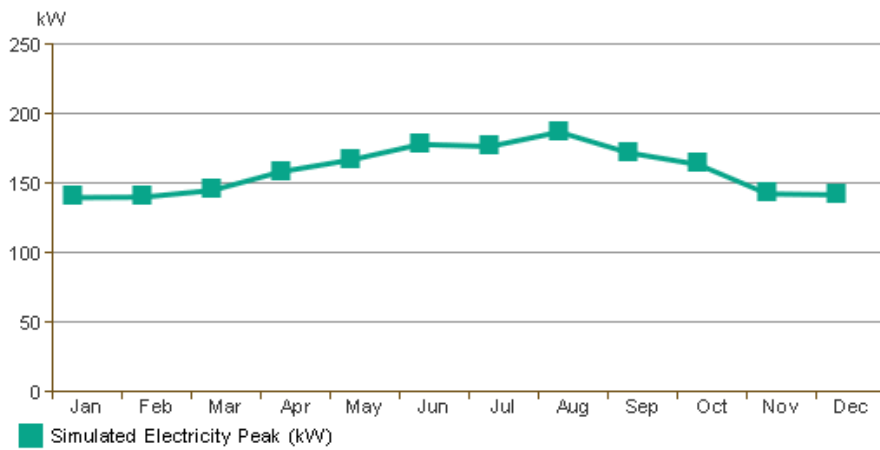
Monthly Fuel Consumption



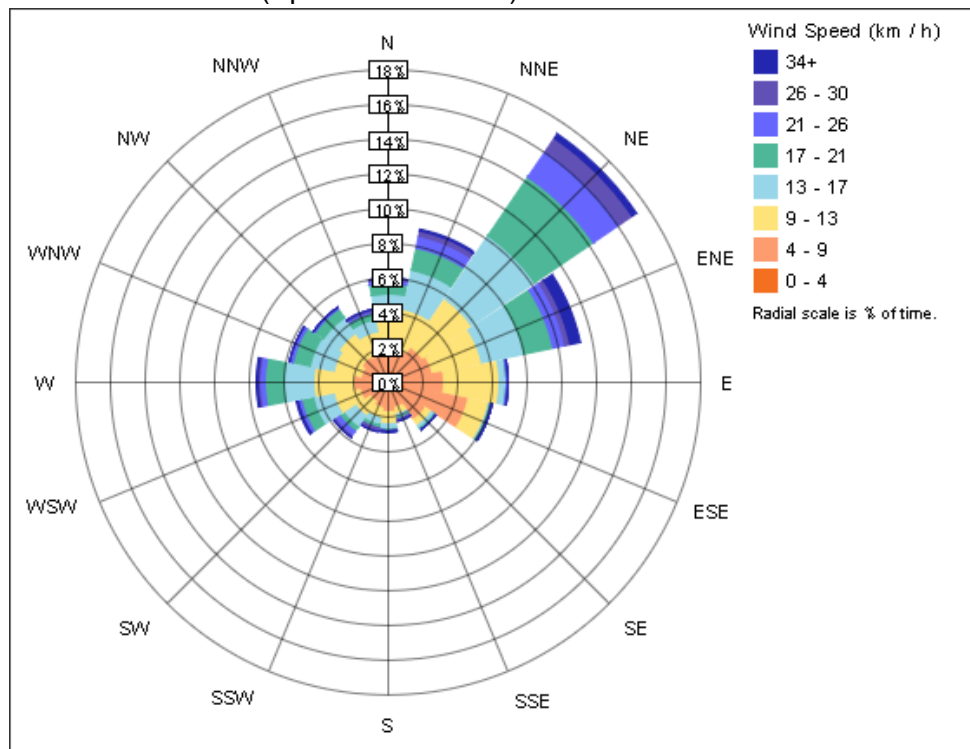
Monthly Electricity Consumption



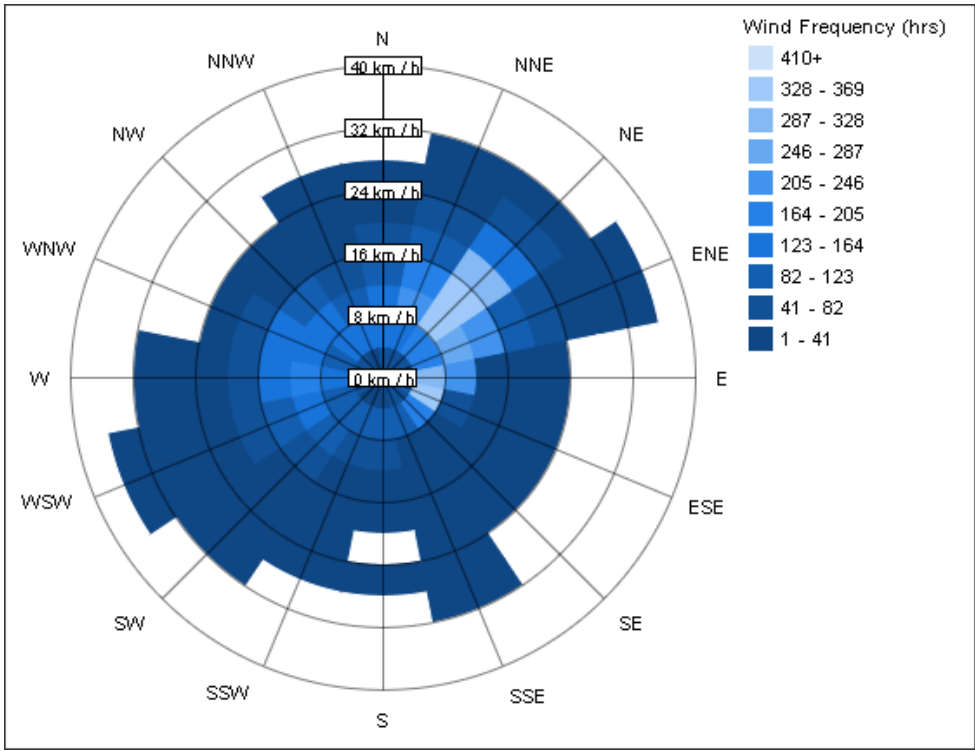
Monthly Peak Demand



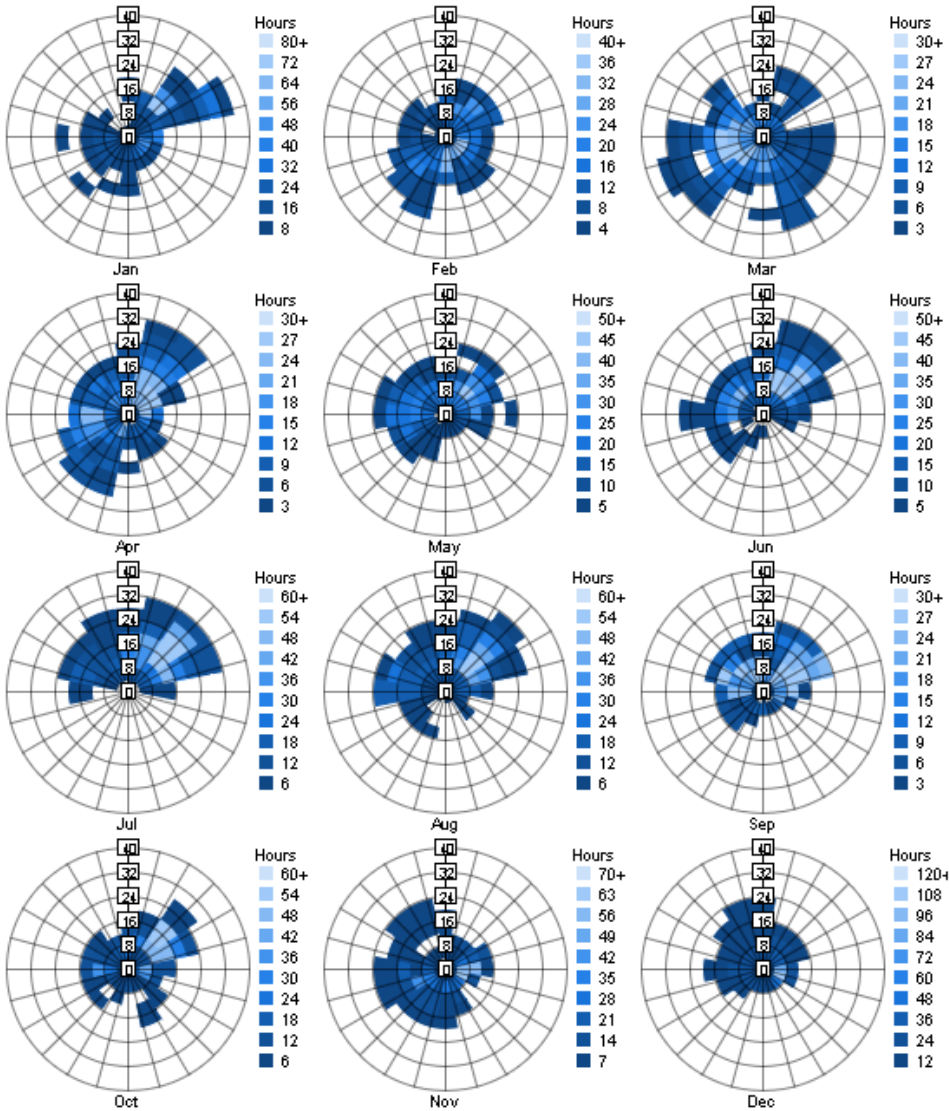
Annual Wind Rose (Speed Distribution)



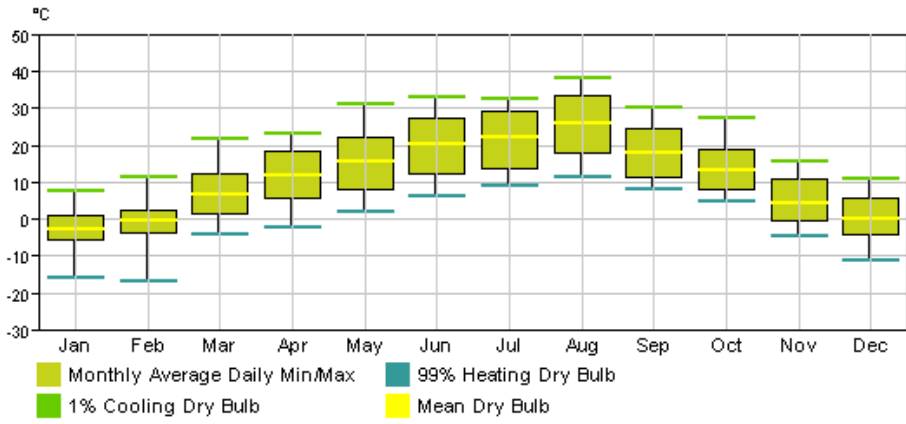
Annual Wind Rose (Frequency Distribution)



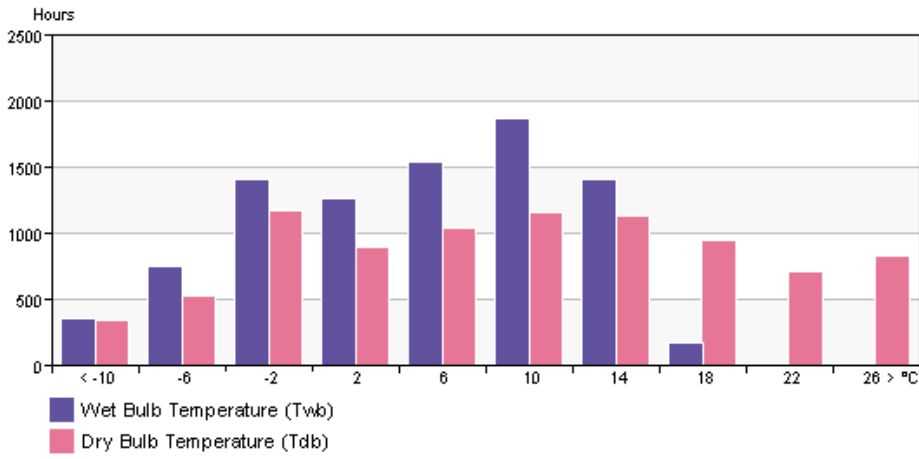
Monthly Wind Roses



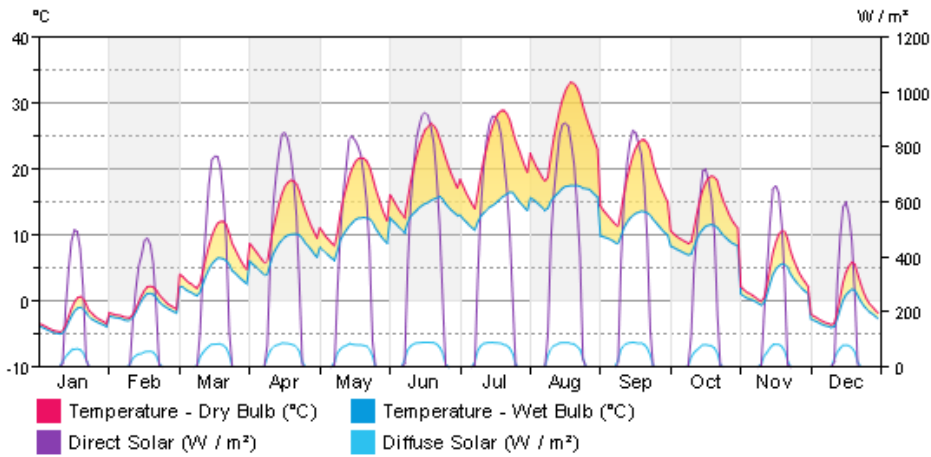
Monthly Design Data



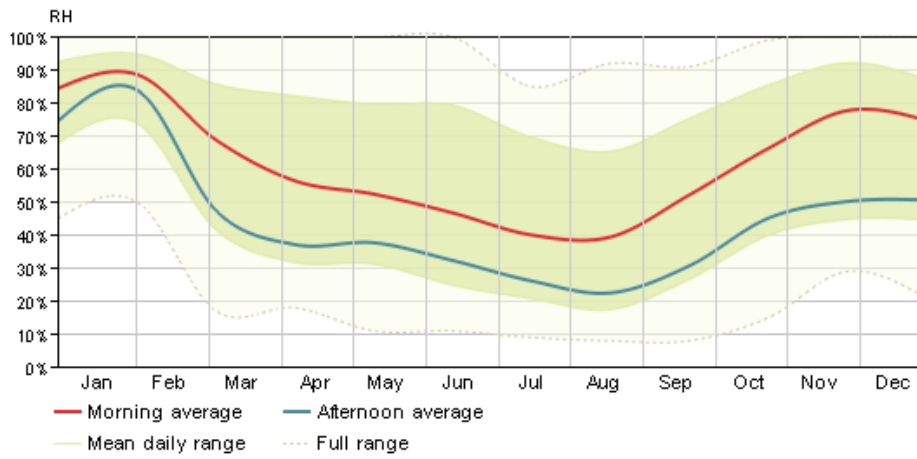
Annual Temperature Bins



Diurnal Weather Averages



Humidity



© Copyright 2015 Autodesk, Inc. All rights reserved. Portions of this software are copyrighted by James J. Hirsch & Associates, the Regents of the University of California, and others.

Energy Analysis Data