

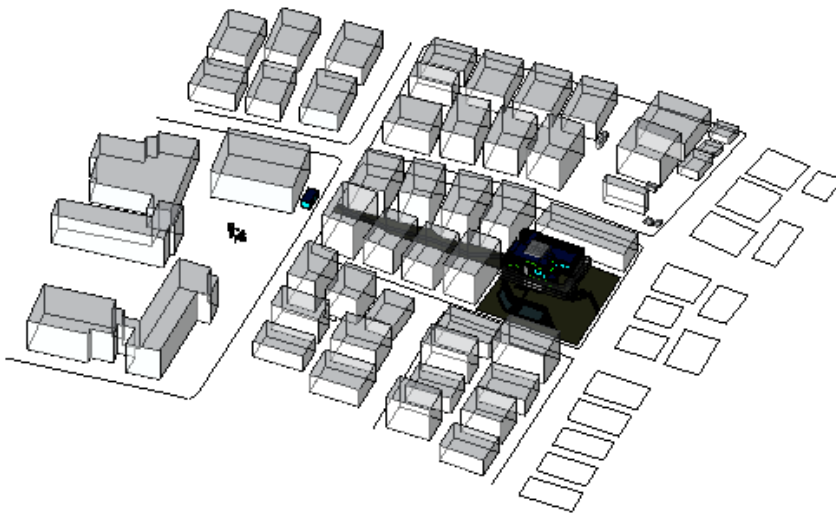


Enerji Analiszzzzsisiz rendericim Analysis

Analyzed at 12/26/2015 1:12:41 PM

Energy Analysis Result

960473



Building Performance Factors

Location:	Ankara, Turkey
Weather Station:	1252135
Outdoor Temperature:	Max: 38°C/Min: -17°C
Floor Area:	704 m ²
Exterior Wall Area:	731 m ²
Average Lighting Power:	9.69 W / m ²
People:	23 people
Exterior Window Ratio:	0.54
Electrical Cost:	\$0.14 / kWh
Fuel Cost:	\$1.44 / Therm

Energy Use Intensity

Electricity EUI:	170 kWh / sm / yr
Fuel EUI:	1,003 MJ / sm / yr
Total EUI:	1,616 MJ / sm / yr

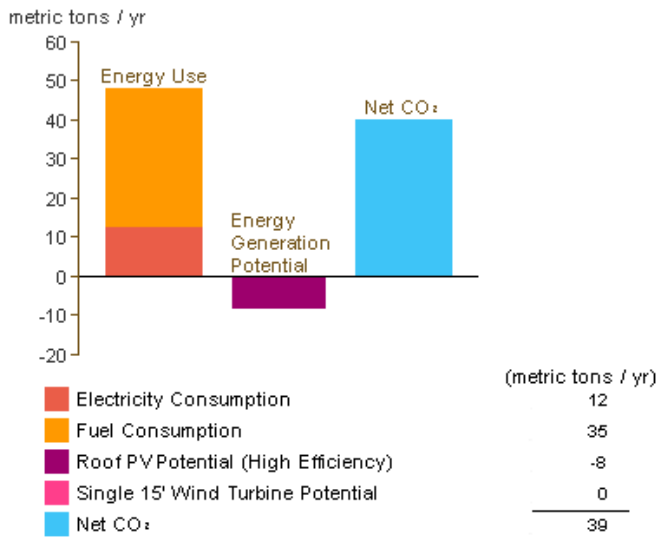
Life Cycle Energy Use/Cost

Life Cycle Electricity Use:	3,598,431 kWh
Life Cycle Fuel Use:	21,207,202 MJ
Life Cycle Energy Cost:	\$358,829
*30-year life and 6.1% discount rate for costs	

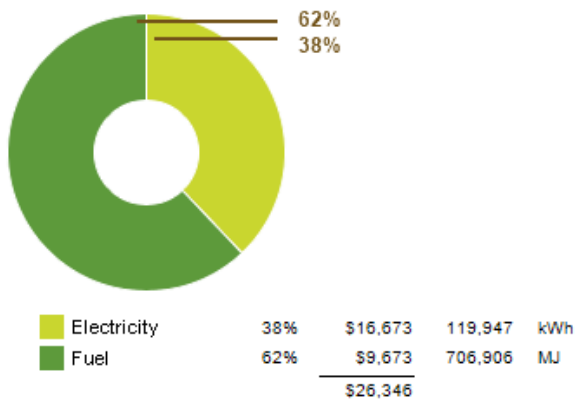
Renewable Energy Potential

Roof Mounted PV System (Low efficiency):	25,246 kWh / yr
Roof Mounted PV System (Medium efficiency):	50,492 kWh / yr
Roof Mounted PV System (High efficiency):	75,737 kWh / yr
Single 15' Wind Turbine Potential:	777 kWh / yr
*PV efficiencies are assumed to be 5%, 10% and 15% for low, medium and high efficiency systems	

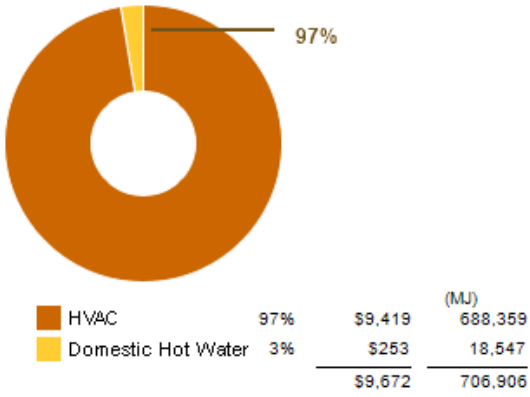
Annual Carbon Emissions



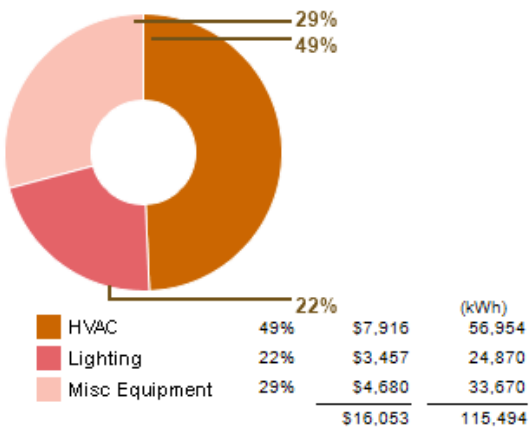
Annual Energy Use/Cost



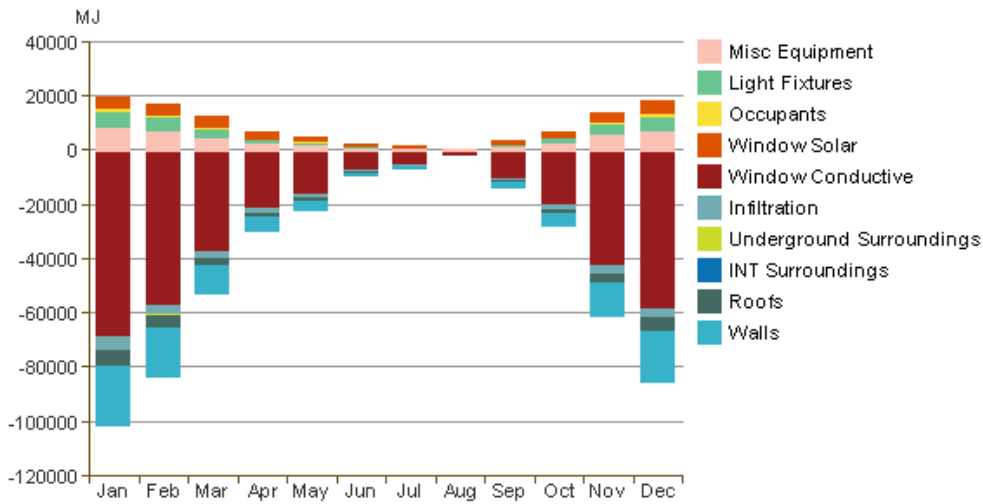
Energy Use: Fuel



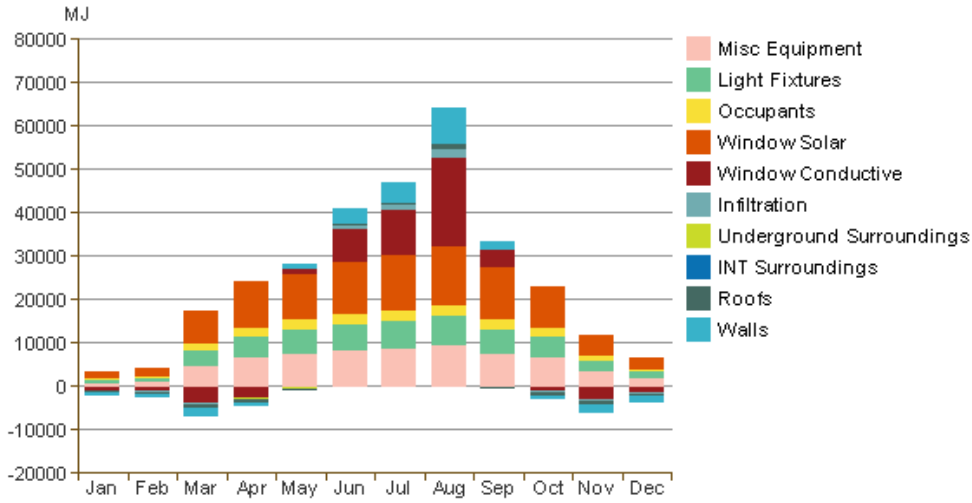
Energy Use: Electricity



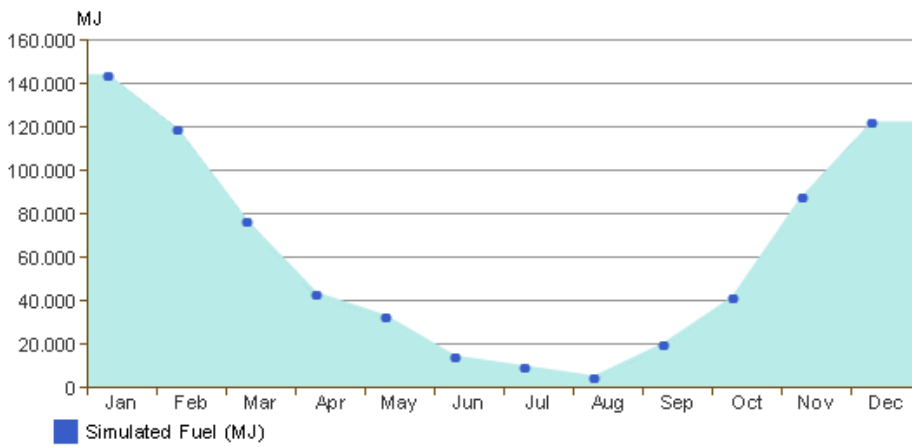
Monthly Heating Load



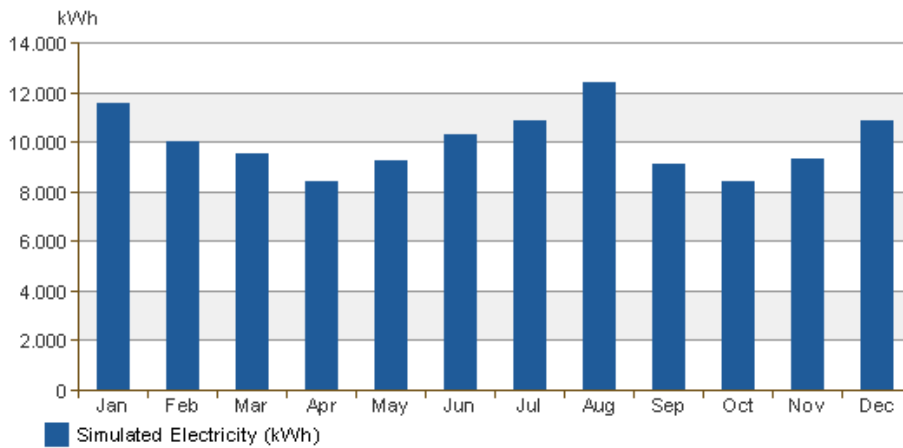
Monthly Cooling Load



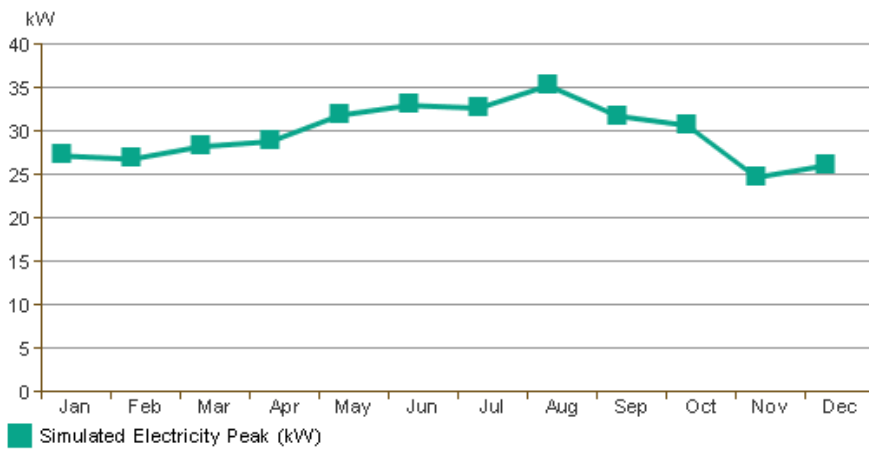
Monthly Fuel Consumption



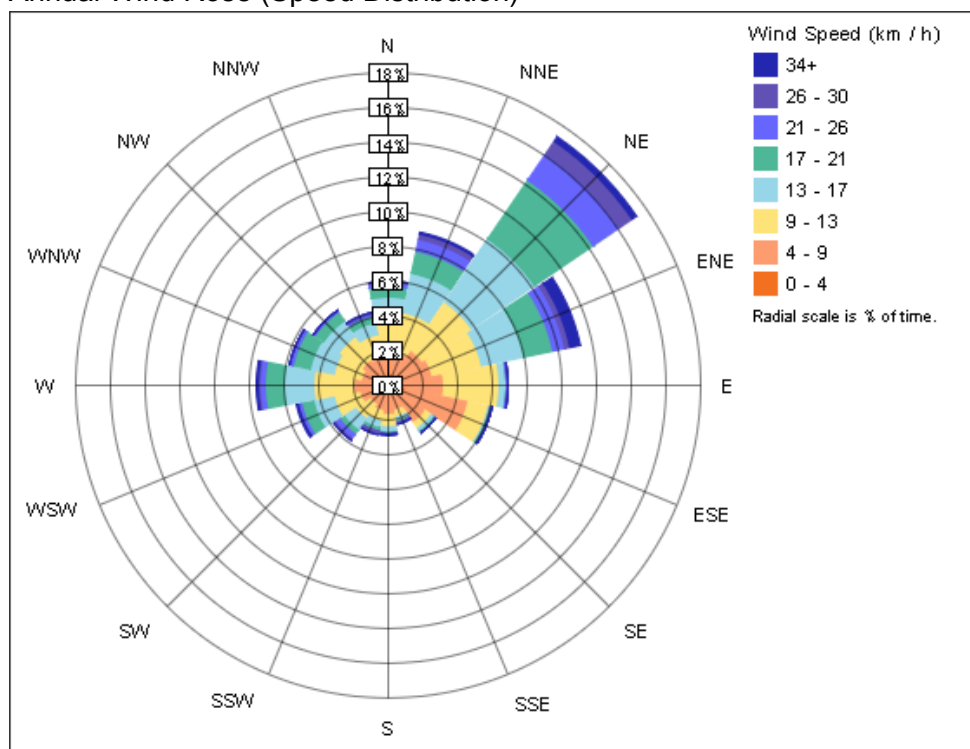
Monthly Electricity Consumption



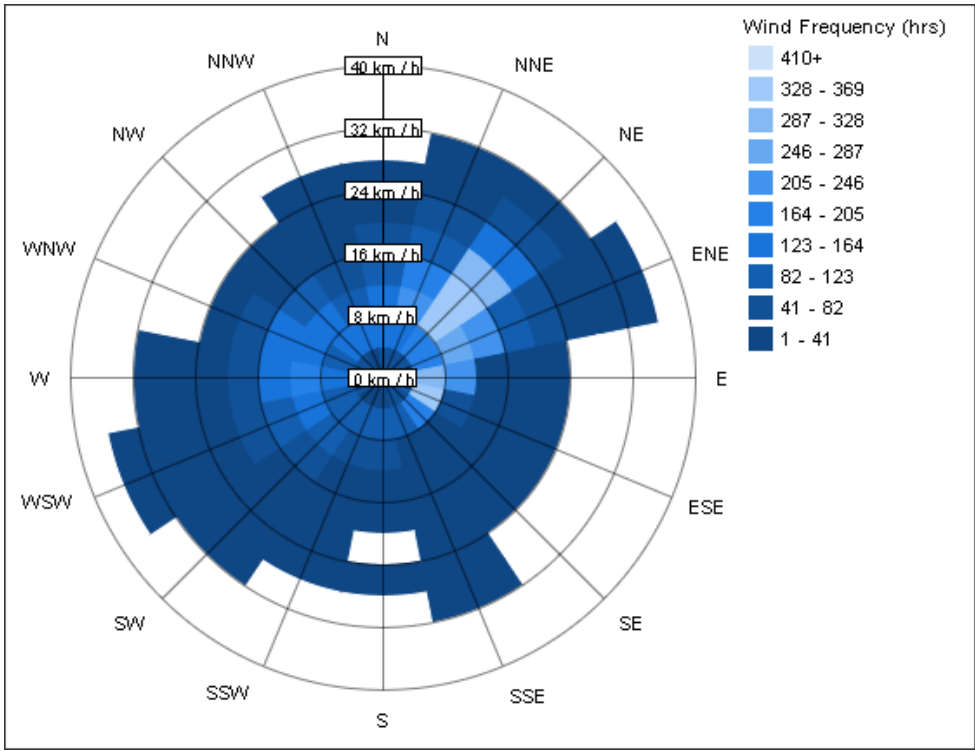
Monthly Peak Demand



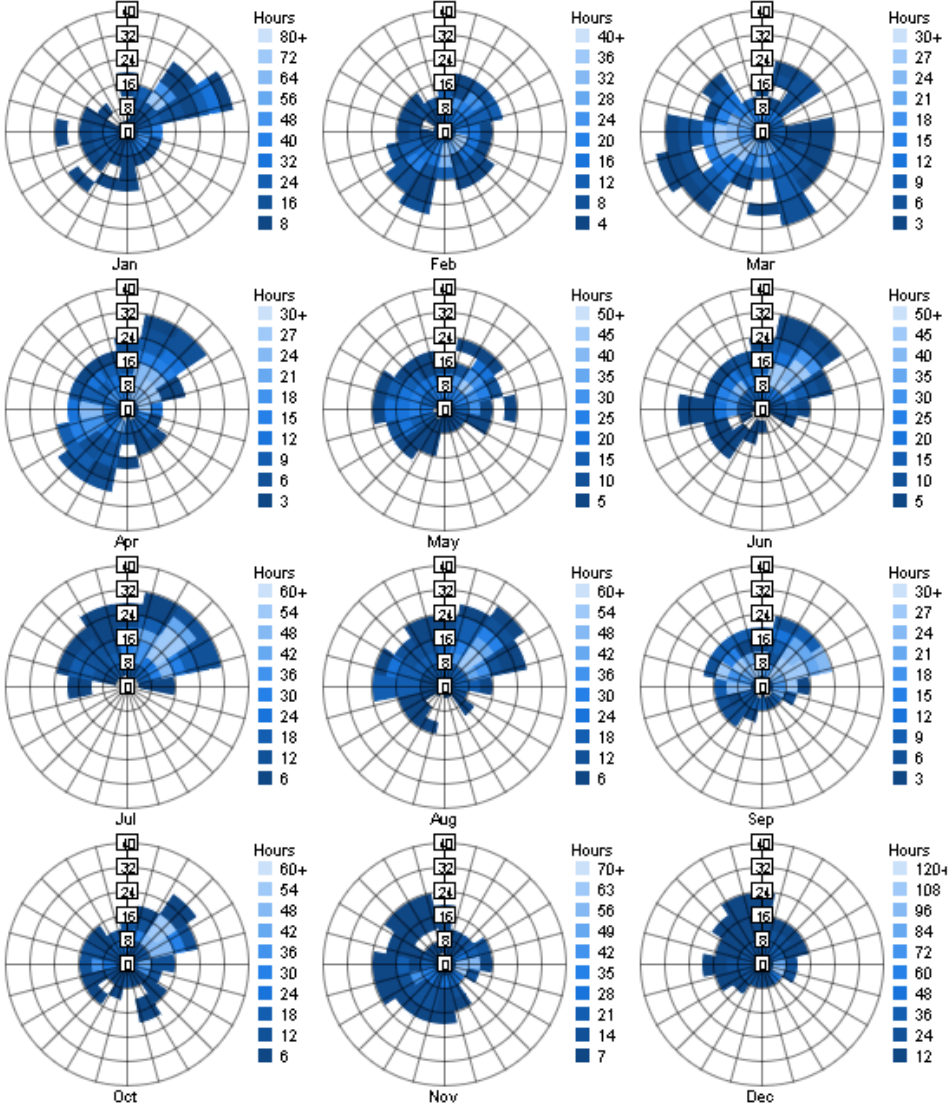
Annual Wind Rose (Speed Distribution)



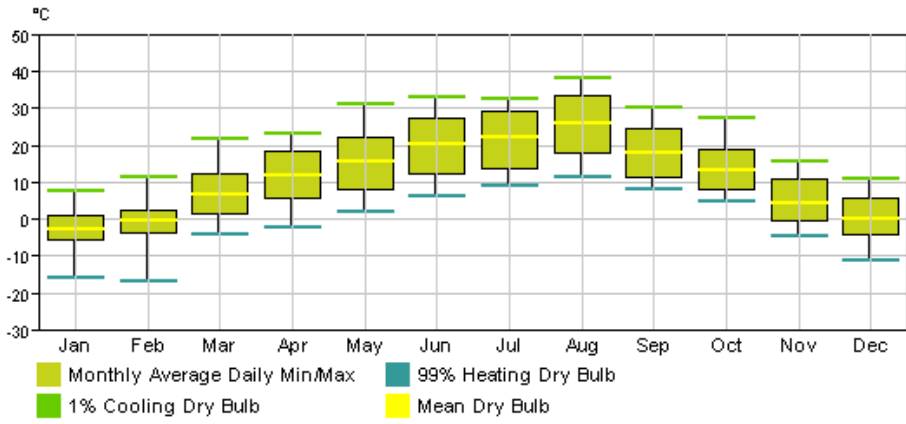
Annual Wind Rose (Frequency Distribution)



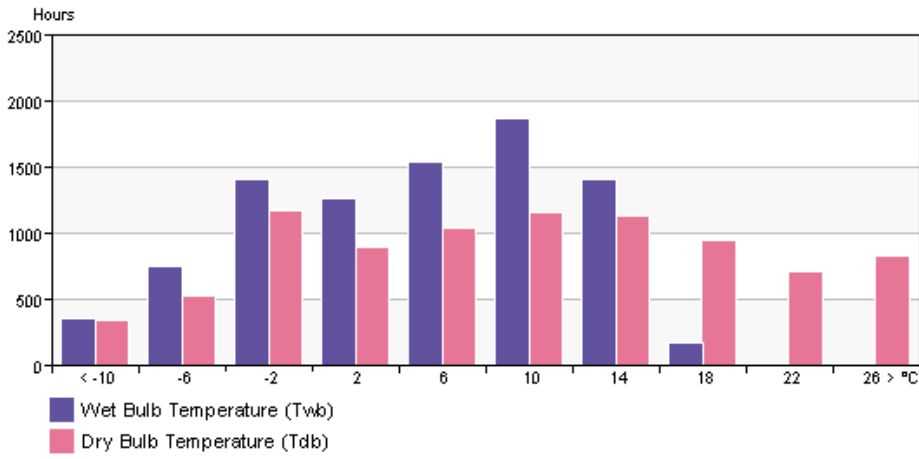
Monthly Wind Roses



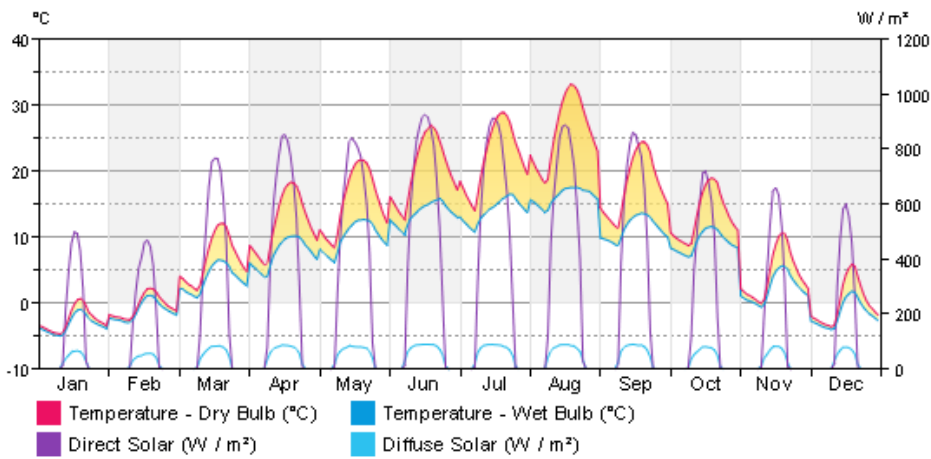
Monthly Design Data



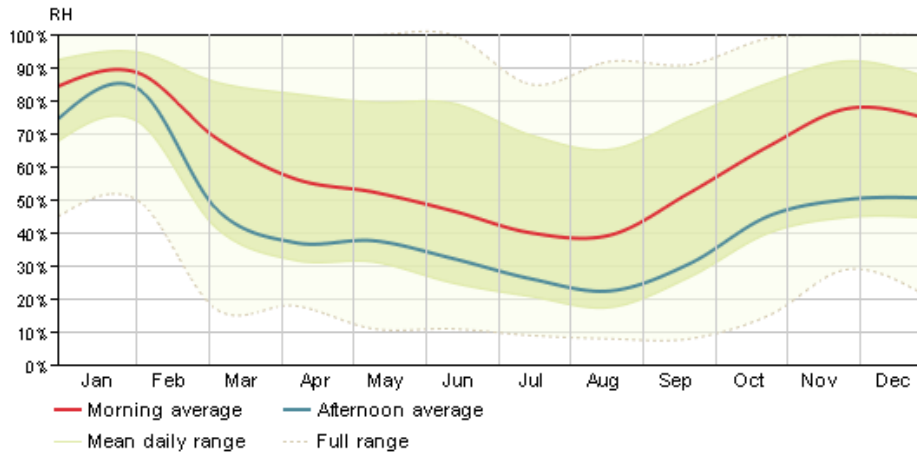
Annual Temperature Bins



Diurnal Weather Averages



Humidity



© Copyright 2015 Autodesk, Inc. All rights reserved. Portions of this software are copyrighted by James J. Hirsch & Associates, the Regents of the University of California, and others.

Energy Analysis Data